

# Walsall SEND Service Communications



Walsall Council

**AUTUMN 1 2025**

## **WELCOME TO THE WALSALL SEND SERVICE AUTUMN TERM COMMUNICATIONS**

These communications are designed for parents and carers of children and young people with Special Educational Needs and Disabilities (SEND). Here, we share important updates, celebrate successes, and highlight opportunities for you to engage with and shape SEND services in Walsall. We are committed to working together to improve support, services, and outcomes for children and young people with SEND. Your voice matters, and we welcome your feedback and involvement.

## **ARE YOU ON OUR MAILING LIST?**



Stay up to date with the latest SEND news, updates, and events in Walsall by joining our mailing list. If you are not already receiving our emails, please contact: [\*\*localoffer@walsall.gov.uk\*\*](mailto:localoffer@walsall.gov.uk)

## **ENGAGEMENT VIDEO PROJECT - THANK YOU!**

Thank you to all the parents and carers who took part in our SEND Engagement Video Project over the summer. It was inspiring to hear your stories, the challenges you've faced, and the support that has made a difference.

These powerful lived experiences will help shape and improve services for children and young people with SEND in Walsall. We also truly appreciate those who shared their views in writing, every contribution matters.

There's still time to share your feedback, please contact: [\*\*localoffer@walsall.gov.uk\*\*](mailto:localoffer@walsall.gov.uk). We'll be running more opportunities like this in the future and would love for you to get involved.



## WORKING TOGETHER TO IMPROVE EDUCATION, HEALTH AND CARE PLAN (EHCP) QUALITY IN WALSALL

We're excited to share that our next **Partnership Quality Assurance (QA) Day** will take place on **Tuesday 30 September**.

This builds on the success of the previous QA Day on **8<sup>th</sup> July**, where partners from education, health, social care and parents/carers came together at Walsall Art Gallery to review real Education, Health and Care Plans (EHCPs), celebrate what's working well, and identify where improvements are needed.

Parents and carers played a vital role, sharing lived experiences that are already shaping new training and helping to drive better outcomes for children and young people with SEND. The September QA Day will be another opportunity to continue this joint work.

If you'd like to be part of it, please get in touch at [localoffer@walsall.gov.uk](mailto:localoffer@walsall.gov.uk)

## HELP US SHAPE WALSALL'S DEFINITION OF ALTERNATIVE PROVISION (AP)

We're working to improve support for children and young people with Special Educational Needs and Disabilities (SEND) in Walsall. As part of this, we're creating a clear, locally agreed definition of Alternative Provision (AP). We're developing this definition together, children and young people, parents and carers, school staff, AP providers, and other professionals.

**What is AP?** - AP is education that takes place outside of a traditional school setting. It's used when mainstream school alone cannot meet a child's individual needs.

**We'd love to hear from you** - Your views are really important. Please take part in our consultation through the link below and share it with others. Every response helps us shape a definition that works for Walsall families.

**\*\*Alternative Provision Consultation\*\***



If you have any questions or require further information, please do not hesitate to get in touch: [Amy.Nash@walsall.gov.uk](mailto:Amy.Nash@walsall.gov.uk)

## SENCO FORUM 2025-2026 UPDATE



The **SENCO Forum** is now well established, with around 100 SEND professionals regularly joining each half-termly session. Held virtually via Microsoft Teams, the Forum brings together colleagues from schools and settings across Walsall to share practice, access training, and hear from guest speakers.

It has become a valued space for strengthening knowledge of key SEND priorities, including Ordinarily Available Provision, the Graduated Approach, and Preparation for Adulthood. An exciting programme of training and information-sharing sessions has been planned for the new academic year, ensuring SENCOs remain equipped with up-to-date guidance and practical strategies to support children and young people with SEND.

Please email [inclusion@walsall.gov.uk](mailto:inclusion@walsall.gov.uk) if you would like to join us.



## SASSY SENSORY SURPRISES CIC - SHORTLISTED FOR GRANT!



**Exciting update for Sassy Sensory Surprises CIC!**

Sassy Sensory Surprises CIC has been shortlisted for the Tesco Stronger Starts Grant, which supports local organisations making a positive impact in their communities.

This recognition relates to their work delivering inclusive, sensory-friendly swim sessions for children and families.

Between October and January, shoppers at selected Tesco stores in and around Dudley will have the option to place a green token in support of shortlisted projects.

We wish Sassy Sensory Surprises CIC the very best in the next stage of the process.





## SEN CASEWORK OFFICERS - NEW ASSESSMENTS

*How We Support Families Through the EHCP Journey*

### Who Are Our SEN Casework Officers?

In Walsall, we have two SEN Casework Officer teams:

- **New Assessment Officers** – support families during the initial EHCP process
- **Annual Review Officers** – manage ongoing EHCP reviews

If your child has recently had an Education, Health and Care Needs Assessment (EHCNA) and an Education, Health and Care Plan (EHCP) has been agreed, you'll be supported by one of our New Assessment SEN Casework Officers.

### How They Support You

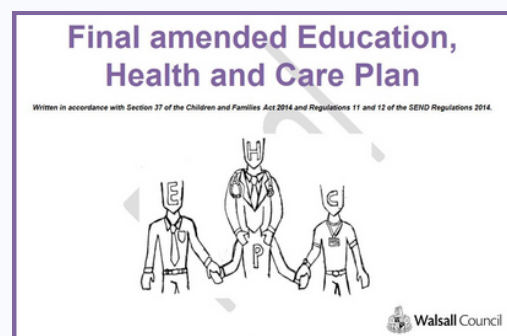
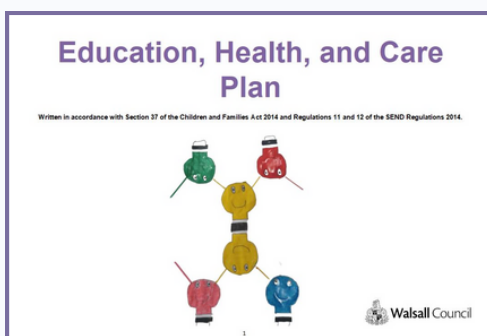
Our New Assessment SEN Casework Officers are here to listen, guide, and support you through the initial EHCP process. Their goal is to make sure your child's needs are clearly understood and their voice is heard every step of the way.

### Our officers are here to:

- Guide you through the EHCP process
- Answer your questions and listen to your concerns
- Gather evidence from schools and professionals
- Using the evidence gathered to write an EHCP that accurately reflects your child's needs
- Keep everything on track and on time
- Champion your child's needs and potential

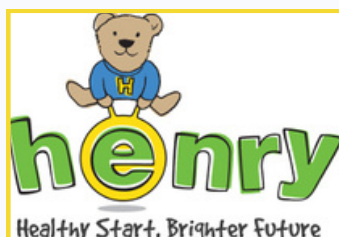
### Working Together

They're part of Walsall's wider SEND team, working with schools, health, and social care to help achieve the best outcomes for your child.



## PARENT/CARER SUPPORT

### HENRY - Creating a Healthy, Happy Start for Every Child



HENRY programmes and workshops are now available in Walsall, offering free, local support for parents and carers of children aged **0-12** years.



Whether you're looking for ideas to encourage healthy eating, create healthier habits and routines, or better understand your child's behaviour, HENRY is here to help. Group-based programmes and one-off workshops are packed with practical tools and strategies to support your family's health and wellbeing. For more information and how to get in touch, use this link: [HENRY](#)

#### Neurodiverse Parent Group

Discover Your Unique Community



Supportive Community



Discussions and Awareness



Workshops and Guest speakers

More Info: [MettaMinds](#)



#### COLLINGWOOD AUTISM SUPPORT GROUP

COLLINGWOOD CENTRE,  
COLLINGWOOD DRIVE, GREAT BARR,  
BIRMINGHAM, B43 7NF  
TEL: 07823 333910/0121 360 1484

**Tuesdays 7 – 9pm**

More Info: [Collingwood](#)



**FACE Walsall Parent Carer Forum**

Families and Carers Empowered

#### WE'RE HERE FOR YOU

##### Who are we?

FACE Walsall Parent Carer Forum is a voluntary group of parents and family carers of children & young people aged 0 - 25 years with various disabilities working in partnership with Education, Health and Social care to help shape the future services in Walsall.

##### What is a Parent Carer Forum?

A Parent Carer forum is a group of parents and carers who work with the Local Authority in Education, Health, Social Care and other providers to make sure the services they plan and deliver meet the needs of the disabled children and families.

##### Who can join?

Parents or carers of a child with any additional need or disability are welcome to join. The forum represents the views of parents and carers in the local area but it does not advocate for individual families.

##### Want to join us?

Contact : [facewalsall@gmail.com](mailto:facewalsall@gmail.com)

Help us shape the services of Walsall through Parent Participation



Web: [www.facewalsall.wordpress.com](http://www.facewalsall.wordpress.com) Tel: 07856 314596



[facebook.com/facewalsall](https://www.facebook.com/facewalsall)



[@facewalsall](https://twitter.com/facewalsall)

FACE Walsall Parent Carer Forum: C/O Walsall Carers Centre, Darwall Street, Walsall WS1 1DA



### SEND PARENT PARTNERSHIP GROUP

Are you a parent or carer of a child or young person with **Special Educational Needs and/or Disabilities (SEND)**? We want to hear from you!

Join our **SEND Parent Partnership Group** to share your experiences, provide valuable feedback, and help shape SEND services in Walsall

#### Why Join?

- **Have your say** - Share your thoughts, ideas, and experiences.
- **Make a difference** - Contribute to improving SEND support and services in Walsall.
- **Connect with others** - Meet with other parents and carers like you!

**Together, we can create positive change!**

If you're interested in joining, we'd love to hear from you. Please get in touch with Sam:

[samantha.house@walsall.gov.uk](mailto:samantha.house@walsall.gov.uk)



Walsall Council



## PARENT/CARER SUPPORT

### WALSALL SENDIASS DROP IN SESSIONS & WORKSHOPS

Monthly drop-in surgeries and workshops for parents, carers and young people. For more info and book your space contact Walsall SENDIASS here: [WalsallSENDIASS](https://www.walsall.gov.uk/sendias)

**Walsall**  
**SENDIASS**

Date	Time	Venue
Tuesday 16 <sup>th</sup> of September 2025	10am-11am	North Family Hub 275 Blakenall Lane, Blakenall, Walsall WS3 1HJ
Tuesday 21 <sup>st</sup> of October 2025	10am-11am	South and Central Family Hub Birchills Street, Walsall, WS2 8NF
Thursday 20 <sup>th</sup> of November 2025	1pm-2pm	East Family Hub Silver Court, Walsall, WS8 6HA
Tuesday 9 <sup>th</sup> of December 2025	11am-12pm	West Family Hub Ilmington House, Crescent Road, Wednesbury, WS10 8AE

Date	Time	Session	Venue
Thursday 11 <sup>th</sup> September 2025	10am-11:30am	<b>Workshop 1 -</b> SEND Support available in schools	Manor Farm Community Centre, Rushall, Walsall, WS41EU (Room 3)
Tuesday 14 <sup>th</sup> October 2025	10am-11:30am	<b>Workshop 2 -</b> Phase Transfer Annual reviews and the process	Manor Farm Community Centre, Rushall, Walsall, WS41EU (Room 3)
Tuesday 11 <sup>th</sup> November 2025	12:30am-2pm	<b>Workshop 3 -</b> How to make a request for a Parental lead EHCP	Manor Farm Community Centre, Rushall, Walsall, WS41EU (Room 3)
Thursday 11 <sup>th</sup> December 2025	10am-12:30pm	<b>Workshop 4 -</b> What is an EHCP and what do all of the sections mean?	Manor Farm Community Centre, Rushall, Walsall, WS41EU (Room 3)

## HEALTH SUPPORT

### SUPPORTED WAITING NETWORK DATES

The supported waiting partnership network meetings will be running every month where there will be guest speakers to advise on a variety of monthly topics and many services who support with access to additional support for you and your child.



**Walsall Family Hubs**  
Supporting families to live happier lives

**NHS**  
Walsall Healthcare  
NHS Trust

### Supported Waiting Parent Network

Is your child on a waiting list to be seen by a paediatric health service?  
Come and join us for support while you wait to be seen.

Forthcoming dates for 2025

- June 25th
- July 30th
- August 27th
- September 24th
- October 29th
- November 26th

For further advice or information,  
telephone **01922 656463**  
or email [pals.officer@nhs.net](mailto:pals.officer@nhs.net)

9.30am-11.30am  
Manor Farm Community Association  
King George Crescent, Rushall, Walsall, WS4 1EU

Each monthly meeting will be held on the **Last Wednesday of the month** at **Manor Farm Community Association, Rushall, WS4 1EU**

#### Next Dates:

- Wednesday 24<sup>th</sup> September
- Wednesday 29<sup>th</sup> October
- Wednesday 26<sup>th</sup> November

For more information or further advice please call: **01922 656463** or email [pals.officer@nhs.net](mailto:pals.officer@nhs.net)

### Black Country Helping Hands

offers support, advice and guidance to parents/carers and their families, **diagnosed or on a pathway for autism or ADHD.**

To get in touch and find out more information use this link: [BCHH](https://www.bchh.org.uk) or scan the QR code on the flyer



**family action**

## Black Country Helping Hands

Helping parents navigate the world of Neurodivergence through understanding behaviours, creating strategies and sharing lived experiences of ASD/ADHD.

**What we do**

We work with parents and carers across the Black Country, supporting you to better understand your young person's autistic or ADHD needs.

We explore behaviours and help to create positive learning strategies as well as sharing lived experiences and creating safe spaces for families to come together.

The journey before, during and after diagnosis is subjective, and parents and professionals are always learning. The TIM programme helped with structure around understanding conditions & behaviours. It has given us lots of information to consider and reflect on.

A Parent's experience.

**What support do we offer:**

- **TIM Virtual workshops BC wide:** Parent/carers and in-school sessions.
- **TIM little people workshops,** aged 4-11 years- Sandwell schools only.
- **Monthly Sharing Rooms:** a safe space for parents.
- **Family Sensory Sessions:** delivered during the summer. a space for families to make connections with other families that have similar lived experiences.
- **Social prescribing/peer support:** element looks to create effective 'lived experience' support through promoting peer mentoring or befriending.
- **Books/resources** for families to access if required and signpost into other services when appropriate.

To contact us please email: [helpinghandsbc@family-action.org.uk](mailto:helpinghandsbc@family-action.org.uk)

Scan for more information



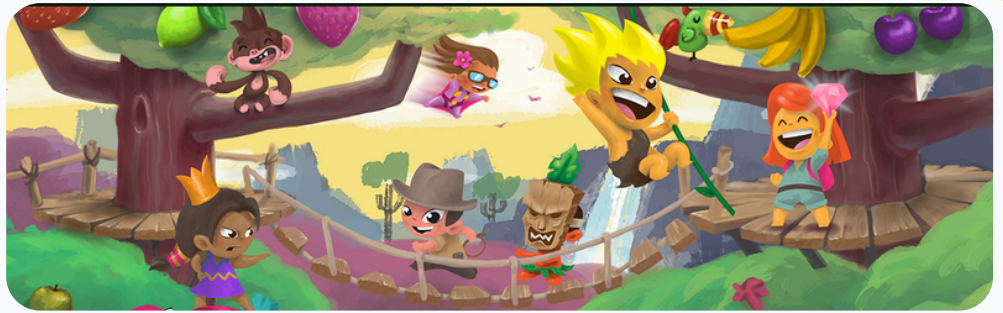
**COMMUNITY FUND**

[family-action.org.uk](https://family-action.org.uk)

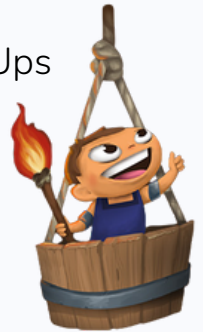
Black Country Helping Hands Flyer May 2025

Family Action. Registered as a Charity in England & Wales no: 264713. Registered as a Charity in the Isle of Man no: 1206. Registered Company Limited by Guarantee in England and Wales no: 01045885.

## HEALTH SUPPORT



**Health for Kids** is specifically for children of primary school age to help them understand their health and feelings. There is also a handy GrownUps page too for articles, news and advice, covering important features of a child's health and development, including healthy minds, healthy bodies, health issues and where to get professional help and support.



Check it out here: [HealthforKids](https://www.healthforkids.org.uk)

## MENTAL HEALTH SUPPORT

### CAMHS Parent/Carer Workshops

*Come and join our Parent/Carer Workshops, run by Black Country CAMHS services (on Zoom for 1.5hours)! Groups held 12pm - 1.30pm.*

We know that suffering from mental health difficulties does not only affect the person struggling, but also the family around them. Parenting a child/young person with mental health difficulties can create additional challenges for parents.

We are running workshops exploring a range of difficulties that children/young people may experience, that can impact their emotional wellbeing.

11.06.25 - Anxiety

09.07.25 - Low Mood / Depression

17.09.25 – Autistic Spectrum Conditions

15.10.25 - Trauma and Attachment

12.11.25 – Anger / Conduct Issues

10.12.25 – Self Harming Behaviours

14.01.26 – Anxiety / OCD



To register your interest telephone **Andrea Ehgartner** on **01922 607400**



bchft\_camhs



@CAMHS\_BCHFT



[www.blackcountrychildrens.nhs.uk/](https://www.blackcountrychildrens.nhs.uk/)

wysa  
Use Wysa. Feel Better.

NHS  
Black Country Healthcare  
NHS Foundation Trust

### Free Emotional Wellbeing Support for Young People in Walsall



Private



Anonymous



Secure



Wysa's AI wellbeing coach provides a safe, non-judgmental space to talk about anything on your mind. Whether you're struggling with **sleep**, **exam stress**, or just need support, Wysa is here to listen.

Gain full access to **150+** self-help exercises, from mindfulness and meditation to therapy tools for anxiety and depression.

**Get FREE student wellbeing support today!**

**Student download**

Scan the QR code from your phone OR use the link:  
<https://get.wysa.uk/rVzkVH2LmBb>

If asked for a code, please enter: **BCWA2023**

Please note: Free resources for students can ONLY be accessed via the QR code or link above, not by downloading the Wysa Everyday Mental Health App from the Google Play or App Store. Only accessible via mobile device, not accessible from a desktop device.





## CHILDREN/YOUNG PERSON OPPORTUNITIES



### SPACE TO BE ME: SENSORY SESSION

Make music, sing, dance and play. Expect instruments and multi-sensory props. Bring your creative energy and be ready to express yourself.



**When:** 27<sup>th</sup> September 2025

**Where:** The Walsall New Art Gallery, Gallery Sq, Walsall WS2 8LG

These sessions are designed to facilitate a life affirming, empowering and creative experience for children with additional needs.

- 12-1pm: A lively session suitable for most children with additional needs.
- 2pm – 3pm: A quieter session for children with Profound and Multiple Learning Disabilities (PMLD) and/or complex support needs.

For more information on booking please visit the website here: [WalsallNewArtGallery](http://WalsallNewArtGallery).

**SHORT BREAKS** provide opportunities for children and young people with a disability to spend time away from their families, relax, develop new friendships, take part in new experiences, and have fun doing positive activities. They also give families a break from their caring responsibilities, a chance to rest or spend time with their other children.



**The Universal offer** can include activities like leisure and sports services, youth and play services, voluntary and community facilities and sports and games clubs

**The Targeted offer** - School Holiday activities, to access this, children and young people should:

- be aged from 8 to 17 years old (up to their 18th birthday)
- live in Walsall
- have a diagnosed disability and
- be in receipt of disability living allowance (DLA)
- An up-to-date short breaks passport (reviewed and updated within the last 12 months) is required to access the service, to ensure we have the right information for the planning of activities and support for our children and young people

The Short Break booklet and expression of interest online form for the activity schemes for every holiday (excluding Christmas) is available six weeks before each school holiday. For information on how to sign up please email: [shortbreaks@walsall.gov.uk](mailto:shortbreaks@walsall.gov.uk)

## CHILDREN/YOUNG PERSON OPPORTUNITIES



**GIRLS YOUTH CLUB**

Every Friday from 4:30pm to 6:30pm at Palfrey Park, Dale Street, WS1 4AF

Only £1 per session!

AGE: 8 - 16

**IQRA**  
Supplementary School and Youth Provision

For more information  
Call: 01922 644006  
Email: [info@iq-ss.co.uk](mailto:info@iq-ss.co.uk)



**STAR LIGHT YOUTH CODING AND GAMING CLUB**

Every Saturday 2PM - 4PM  
From 4th Jan 2025  
Book Online

**Gaming**

**Coding**

**Virtual Reality**


**Relax with friends**




**Free Entry**  
Age 9 - 16

**Drop off sessions**  
25a Station St, Walsall, WS2 9JZ  
07396 765853  
[www.starlightmulticic.co.uk](http://www.starlightmulticic.co.uk)

**Funded By**  
west midlands police and crime commissioner

## KINGS TRUST - CONFIDENCE, COURSES & CAREERS



 <p><b>Build your confidence</b></p> <p>Ages 16 to 30</p> <p>Develop skills for life and work and gain a new perspective by joining one of our confidence-building courses.</p> <p><a href="#">Start building your confidence</a> →</p>	 <p><b>Get a job</b></p> <p>Ages 16 to 30</p> <p>Work with top employers that are ready to hire fresh talent – such as the NHS, M&amp;S and HSBC. And receive support to create a standout CV and develop interview techniques.</p> <p><a href="#">Build skills for work</a> →</p>	 <p><b>Start your business</b></p> <p>Ages 18 to 30</p> <p>Develop the skills and knowledge you need to launch and run a successful business. Create your business plan with the support of a mentor, and apply for funding if you need it.</p> <p><a href="#">Kickstart your business journey</a> →</p>
--	--	---

Whatever challenges you're facing, if you're aged 16 to 30, The King's Trust (formerly known as The Prince's Trust) is here for you.

You've got what it takes to gain the confidence and skills to get a job. But sometimes it takes that first step, and we're here to help.

For more information and what courses are coming up check out their website:

**KingsTrust**

## EVENTS/OPPORTUNITIES

SEN and Disability  
Information, Advice  
and Support

Walsall  
sendias

### WALSALL SENDIASS SEND FAIR

Please come along to our SEND Fair to meet a range of professionals and ask any questions or obtain any information and advice

**Date:** Tuesday 23rd September

**Time:** 10am – 12pm

**Location:** Conference Room, Manor Farm  
Community Centre, Rushall, WS4 1EU



Book your free place here: [SENDIASSFair](#)



### SAVE THE DATE SEND INFORMATION FAIR

FRIDAY 7<sup>TH</sup> NOVEMBER - 10AM - 12PM  
BLOXWICH ACTIVE LIVING



### Sendias Community Engagement Volunteer

**Service**  
Walsall SENDIASS

**Time Commitment**  
6 months, 4 hours per week

**Role Based Details**  
Based at Manor Farm Community  
Association, but visiting community  
hubs or schools in the area

**Who does this role help?**  
Children, Families, Individuals or  
families living with additional needs,  
Parents, Young People

family  
action



For more information  
on how to apply and  
get involved please  
use this link:

**Volunteer**



Walsall College Open  
Evening, for more information  
visit their website:

**WalsallCollege**

**OPEN  
DAY**



**THURSDAY  
9 OCTOBER  
4.30PM - 7.30PM**

 Walsall College







National Inclusion Week 2025 takes place from 15<sup>th</sup> - 21<sup>st</sup> September, with the theme "Now is the Time".

This annual event, organised by Inclusive Employers, encourages organisations and individuals to focus on creating more inclusive workplaces and communities by taking meaningful, sustained action rather than just raising awareness.

## SEND SERVICES FEEDBACK

Please could you spare a few minutes to complete this feedback form on your experience with the SEND Services. Please use the QR code or link below. Your feedback is greatly appreciated.

[SENDSERVICEFEEDBACK](#)



## FEEDBACK

If you have any feedback or wish something to be included in the next SEND Communications please do not hesitate to get in touch.

**Next Issue:** SEND Services Communications Autumn 2

**Submit your updates by 1<sup>st</sup> October to be included!**

Please use the below emails

Sam: [samantha.house@walsall.gov.uk](mailto:samantha.house@walsall.gov.uk)

Local Offer: [localoffer@walsall.gov.uk](mailto:localoffer@walsall.gov.uk)



**Thank you for being part of the Walsall SEND community!**



**Walsall Council**

