

## LONG TERM PLAN AND OVERVIEW (2024-2025)



### Blue Abyss

**SCIENCE:**

- including Animals humans
- Living things and their habitats

**GEOGRAPHY:**

- Oceans & Seas

**ART:**

- Watercolour
- Depicting the seas

**D&T:**

- design & make an aquarium



### Frozen kingdom

**GEOGRAPHY:**

- Arctic and Antarctica
- Mapping

**SCIENCE:**

- Living things / habitats
- Materials

**HISTORY:**

- Significant people (British influence)

**D&T:**

- Ice buggy prototype



### Gods & mortals

**HISTORY:**

- Ancient Greece

**GEOGRAPHY:**

- European country comparison

**SCIENCE:**

- Earth & Space
- Light

**ART:**

- Historical architecture
- Sculpture & pottery



### Relics, Rocks & rumbles

**HISTORY:**

- Roman Empire & impact

**GEOGRAPHY:**

- Volcanoes & rugged earth
- Mapping famous landmarks

**SCIENCE:**

- Materials (including rocks)
- States of matter

**ART / D&T:**

- Cross sectional diagrams



### Wriggle & crawl

**SCIENCE:**

- Animals including humans
- Plants

**GEOGRAPHY:**

- local area, mapping and fieldwork

**D&T:**

- Design & make Minibeast homes

**COMPUTING:**

- Programme a bee!



### Rio de Vida

**GEOGRAPHY:**

- South America study – Brazil
- Compare and contrast

**SCIENCE:**

- Sound / Light
- Forces (including magnets)

**ART:**

- Cultural art
- Textiles

**MUSIC:**

- Listen, evaluate and compose carnical music



## LONG TERM PLAN AND OVERVIEW (2025-2026)



### Tribal tales

**HISTORY:**

Prehistoric Britain  
– Stone Age to Iron Age

**GEOGRAPHY:**

Fieldwork; Human and physical geography; Using maps and aerial images

**D&T:**

Designing and making tools;  
Building structures



### Street detectives

**GEOGRAPHY:**

Fieldwork in the local area;  
Human and physical features;  
Using and making maps; Aerial images

**ART:**

Famous local artists; Creating views from the local area

**HISTORY:**

Changes within living memory;  
Significant people; Places and events in the local area



### Traders & raiders

**HISTORY:**

Anglo-Saxons and Vikings

**D&T:**

Making weapons and jewellery;  
Models of Anglo-Saxon homes;  
Clay rune stones

**GEOGRAPHY:**

Using maps; Settlements; Europe



### Allotment

**GEOGRAPHY:**

Land use;  
Geographical skills and fieldwork; Map work; Climate

**SCIENCE:**

Life cycles of animals and plants; Working scientifically

**D&T:**

Cooking and nutrition; Making planters; Making structures

**ART:**

Botanical drawing and painting



### Towers, tunnels & turrets

**HISTORY:**

Castles and castle life;  
Significant individuals

**D&T:**

Making models of towers, bridges and tunnels

**GEOGRAPHY:**

Amazing structures around the world; Towers and bridges in the local area



### Scrumdid dlyumptio us!

**D&T:**

Cooking and nutrition

**GEOGRAPHY:**

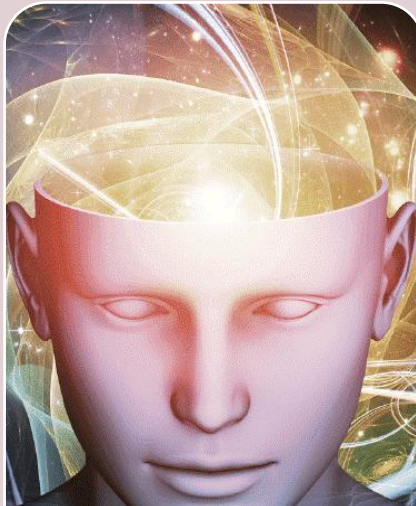
World knowledge  
Food trade

**ART:**

Sculpture



## LONG TERM PLAN AND OVERVIEW (2026-2027)



### ID

**ART:**

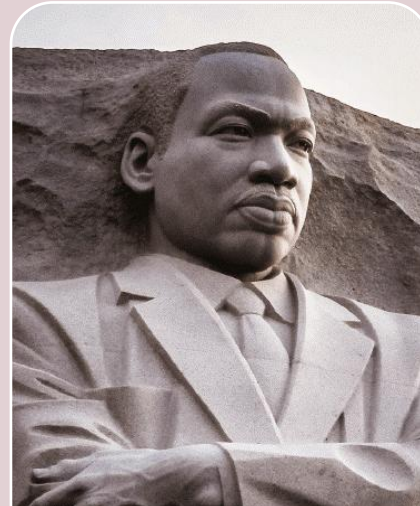
Portraits & figurines

**D&T:**

Tools and equipment;  
Design; Fashion and clothing

**SCIENCE:**

Classification;  
Families and inheritance;  
Working scientifically



### Heroes & Villains

**PSHE:**

Moral issues and dilemmas

**GEOGRAPHY:**

Locational knowledge

**D&T:**

Making puppets;  
Flip books



### Off with her head!

**HISTORY:**

British history beyond 1066 -  
The Tudors

**ART:**

Portraits;  
Sketching Tudor fashions; 3-D modelling

**GEOGRAPHY:**

Maps



### Beast creator

**ART:**

Drawing;  
Perspectives

**GEOGRAPHY:**

Fieldwork;  
Contrasting location

**D&T:**

Making models



### Revolution

**HISTORY:**

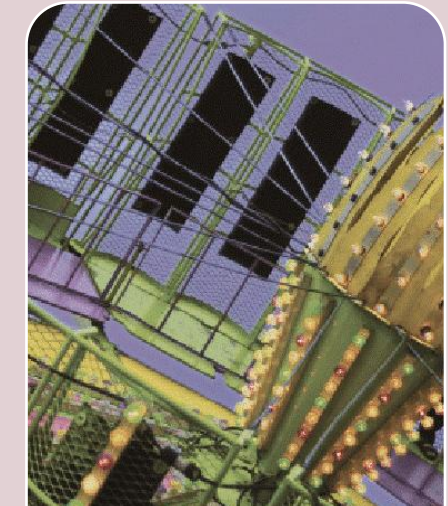
Victorians

**ART:**

Artists of the Victorian period;  
Printing

**GEOGRAPHY:**

Cities and transport in Victorian times;  
Maps



### Scream Machine

**D&T:**

Designing rides;  
Programming models;  
Mechanical systems;  
Evaluation; Food

**ART:**

Photography and image editing

**GEOGRAPHY:**

UK places map work;  
Theme parks



## LONG TERM PLAN AND OVERVIEW (2027-2028)



### Moon zoom

**D&T:**

Designing and making space-themed vehicles;  
Evaluating toys;  
Using mechanisms

**HISTORY:**

British history beyond 1066 -  
Space history

**GEOGRAPHY:**

Satellite images;  
NASA base



### Britain at war

**HISTORY:**

First and Second World Wars;  
Causes; Warring nations; Key events and battles; Impact on citizens and everyday life; Significant leaders; End of war; Local history study; Remembrance

**GEOGRAPHY:**

Place and interconnections;  
Maps

**D&T:**

Recipes;  
Structures



### Bright lights, big city

**GEOGRAPHY:**

Countries and capital cities of the UK; Physical features of the UK; Human features; Landmarks; Maps; Compass directions; Geographical similarities

**ART:**

Drawing

**HISTORY:**

Monarchy



### Urban pioneers

**ART:**

Photography;  
Graffiti art;  
Observational drawing

**GEOGRAPHY:**

Fieldwork

**PSHE:**

Being safe;  
Presenting opinions



### Pharaohs

**HISTORY:**

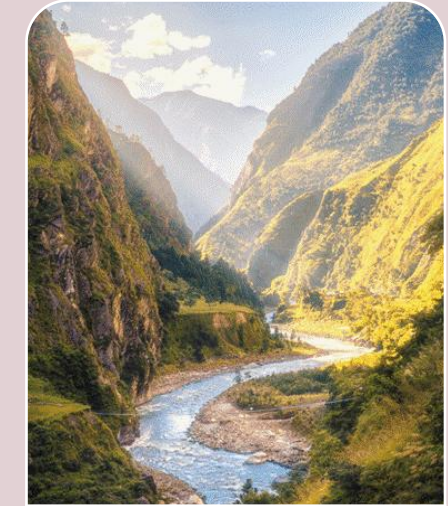
Ancient Egypt

**ART:**

Drawing artefacts;  
Headwear;  
Hieroglyphic amulets

**D&T:**

Egyptian food;  
Making tombs and pyramids



### Misty mountain, winding river

**GEOGRAPHY:**

Rivers; Maps; Grid references; Aerial images; Mountains; mountains; Compass points; Water cycle; Data analysis

**SCIENCE:**

Water cycle;  
Habitats;  
Changing environments

**D&T:**

Mountain climbing equipment